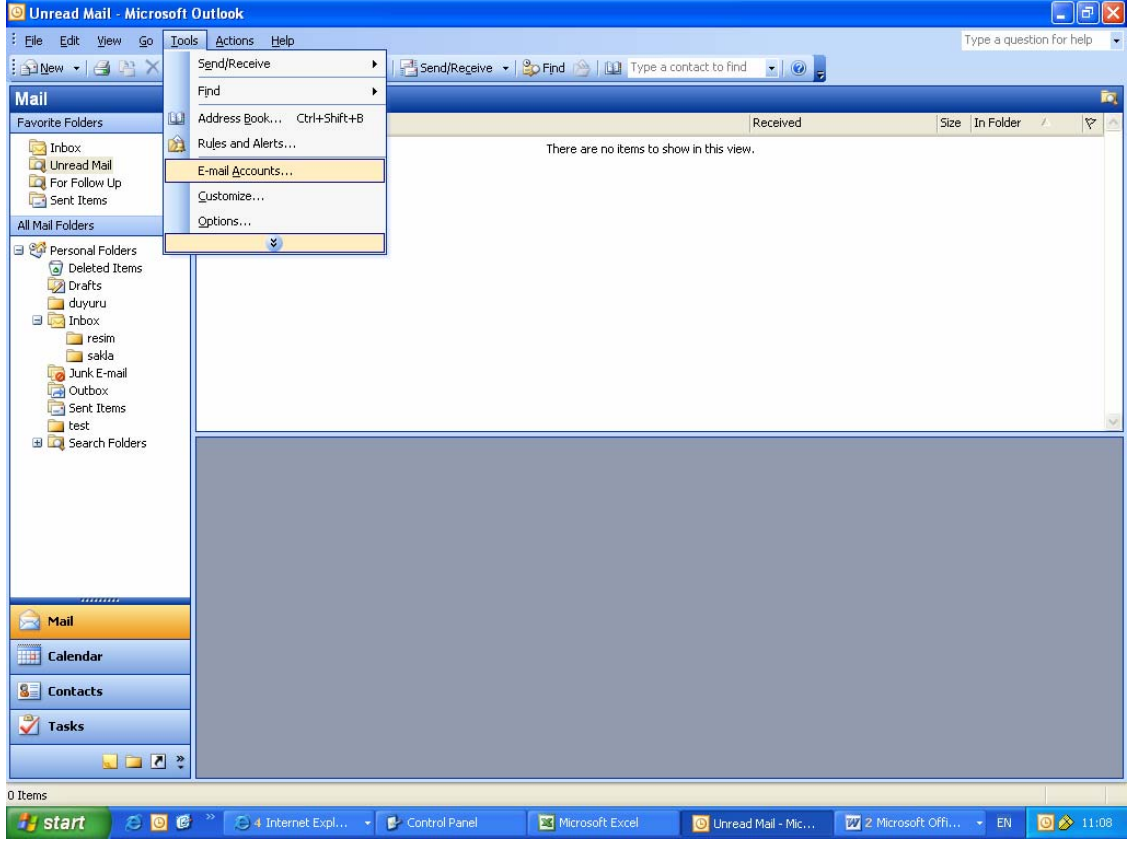


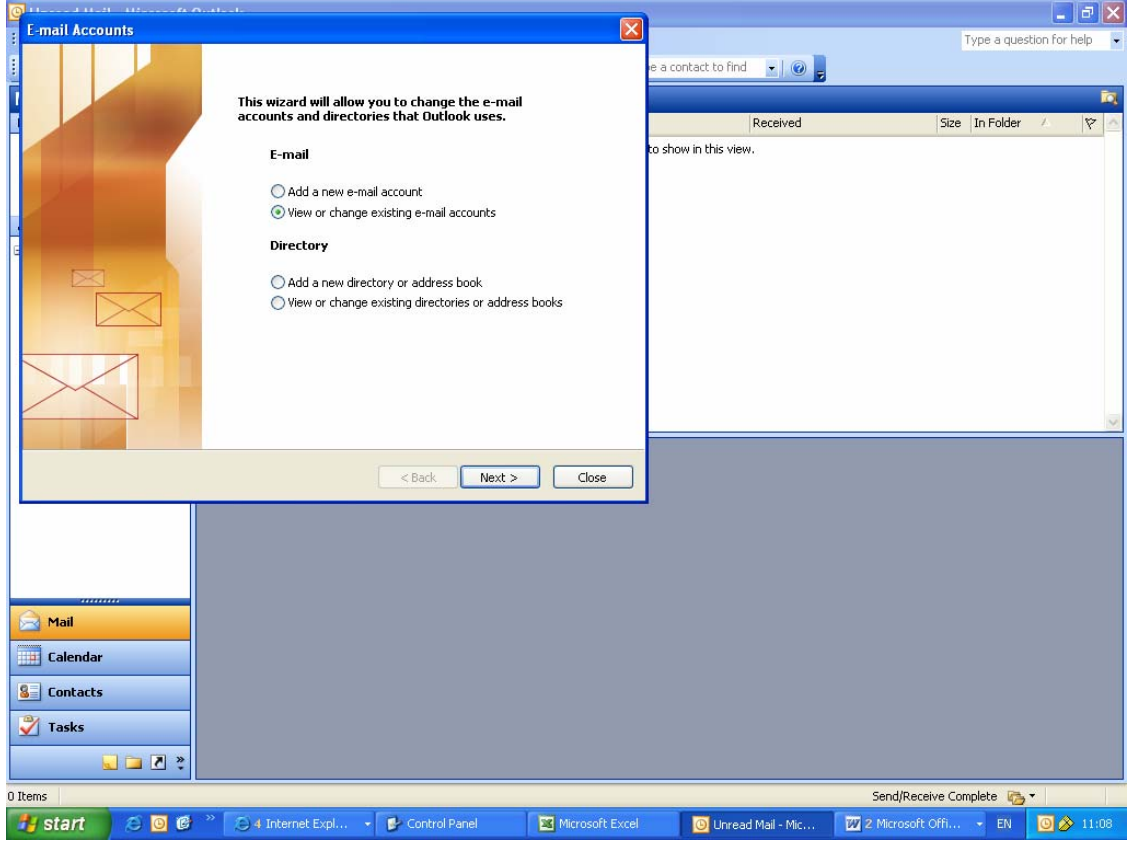
OUTLOOK 2002-2003 için ayarlar

1- “Tools” menüsünden “E-mail Accounts” seçilir.

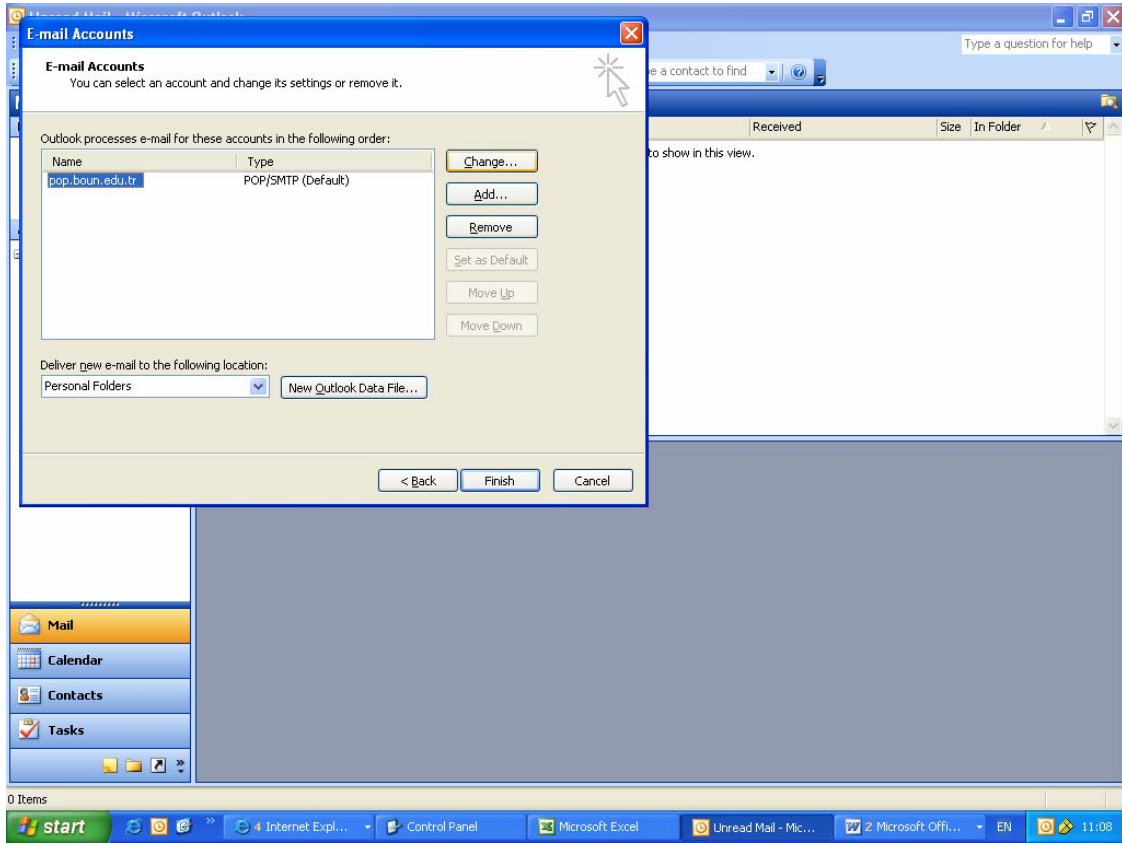
Click “Tools” on the menu, and select “E-Mail Accounts” .



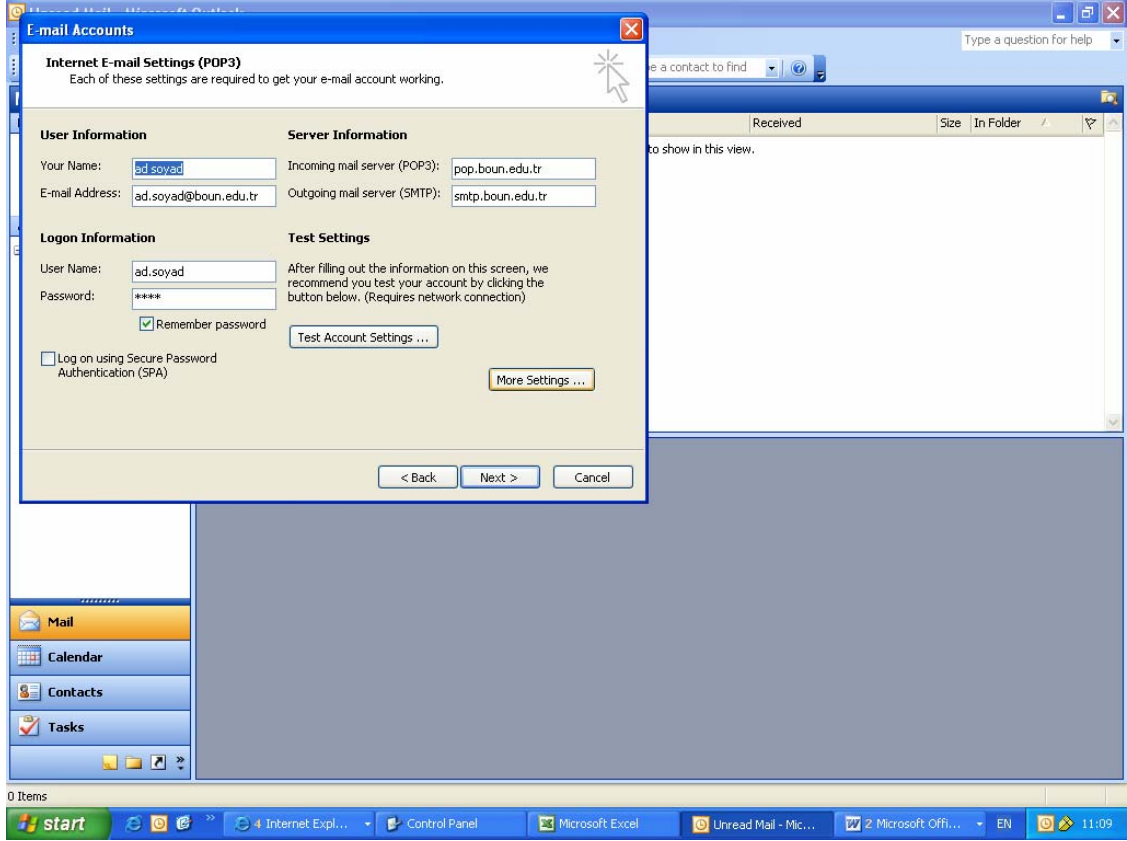
2- Gelen ekranda “View or change existing e-mail accounts” seçilir ve “Next” tıklanır.
Choose “View or change existing e-mail accounts” and click “Next”.



3- pop.boun.edu.tr seçilir ve “Change” butonu tıklanır.
Select your account and click “Change”.

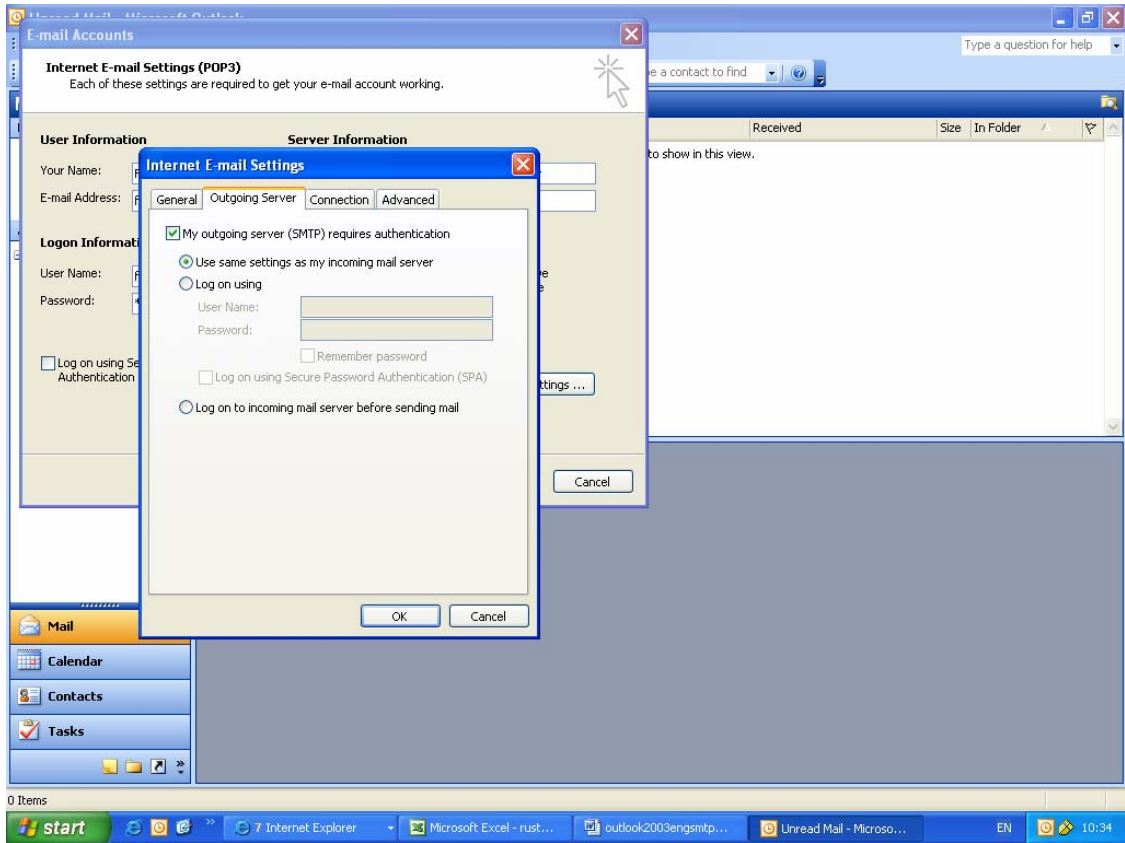


4- Bu pencerede “More Settings” seçilir.
At this window click “More Settings”

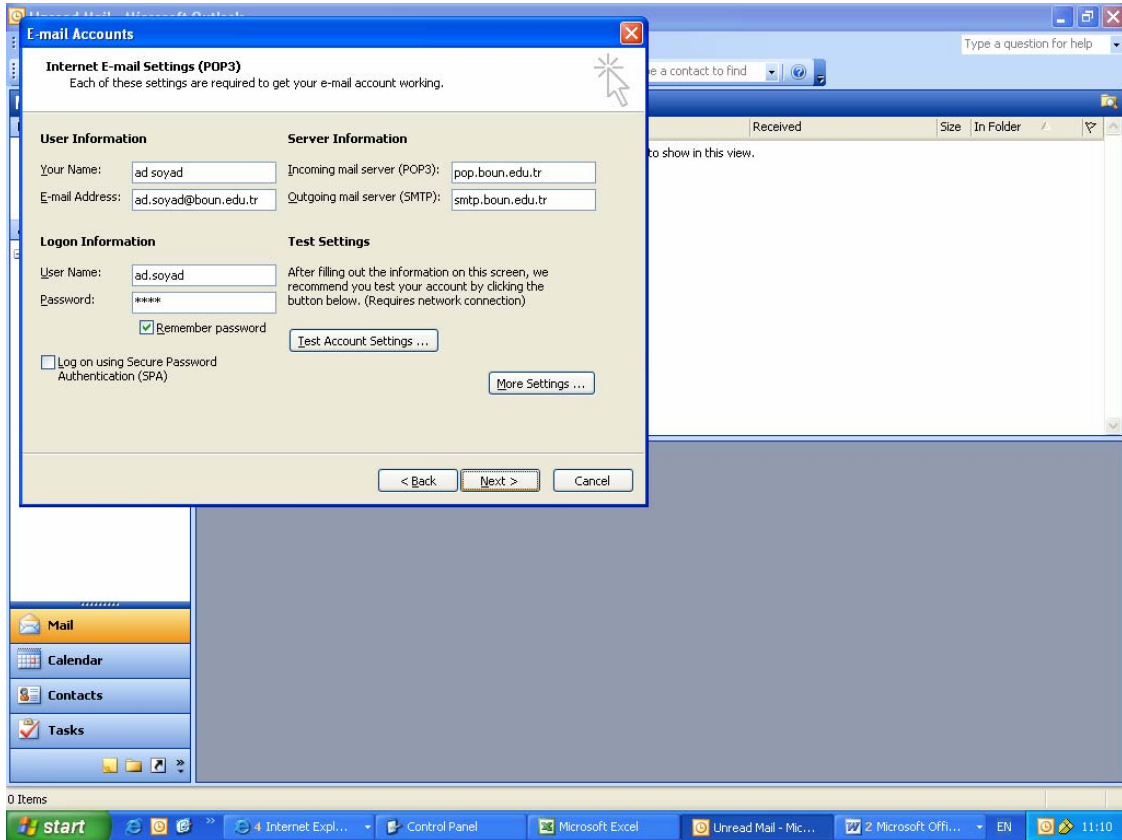


5- SMTP doğrulama için “My Outgoing Server (SMTP) requires authentication” kutusunu ve “Use same settings as my incoming mail server” kutusunu işaretleyiniz ve “OK” tuşuna basınız.

For SMTP Authentication check the box “My outgoing server (SMTP) requires authentication” and check the box “Use same settings as my incoming mail server”. And press “OK”



6- Gelen ekranda “Next” tuşuna basınız.
Then press “Next”.



7- Bu pencerede de “Finish” tuşuna basılarak işlem tamamlanır.
Press “Finish”.

